

WMO ARTS AND SCIENCE COLLEGE, MUTTIL, WAYANAD

CRITERIA 1

1.3.2: FIELD WORK AND INTERNSHIP

**Department of Social Work
&**

Department of Mass Communication and Journalism

Academic year 2021- 2022

FIELD WORK AND INTERNSHIP

Department of Social Work

The Department of Social Work at WMO College aims at providing the best opportunities for the students with regard to their professional development. The components of field practicum such as placement, monitoring, coordination and final grading of the students are done by the Field Practicum Faculty Coordinator. The department aims at providing field placement as an employment model to equip students for their career. It offers the students the prospects of getting acquainted with the practical and the professional experience that helps to observe the Professional Social Workers' role in the helping process. The field practicum in the community setting is designed to get a grass root level first-hand experience whereby the students are expected to identify opportunities for the involvement in community. The exposure focuses on developing students' expertise on knowledge, attitude, social work methods and professional self. The two-year field practicum in the MSW program is planned in such a way that the students will be able to do their practicum placement in various social work settings so that they are professionally well equipped. Hence, the students have to do a total of five slots of practicum placement (126 days).

Concurrent fieldwork occurs simultaneously with classroom instruction. Students spend two/two days a week at the field work agency and attend classes for the remaining days. Having classes and field work side by side enhances the student's reflection on her placement and practice, encourages a greater depth of learning tailored to the placement experience, and facilitates the integration of theory and practice. The block placements allow students to have an intensive experience of social work practice in an agency setting. The students are placed in the agency for a month continuously to gain experience in social work practice. The students are encouraged to take up interstate placements to enhance their cultural competence and social awareness through the exposure to diverse cultures. There will be a minimum of three block placements during the entire period of MSW course.

Department of Mass communication and Journalism

The primary aim of the department of Mass Communication and Journalism is to equip our students with the necessary skills to excel in various fields such as journalism, television production, radio production, advertising, public relations, film studies, digital media, and photography. An internship plays a crucial role for mass communication and journalism students as it provides them with hands-on experience in the media field. Interns are often given the opportunity to work on real projects and gain a better understanding of news and its techniques. They also have the opportunity to network with journalist and make connections that can help them in their future careers. Additionally, internships can also help students determine if the field is a good fit for them and help them determine which area of the field they would like to pursue.

TALES OF FIELD WORK

Department of Social Work



FIELD PRACTICUM PRESENTATION SECOND SEMESTER

DEPARTMENT OF SOCIAL WORK
WMO ARTS AND SCIENCE COLLEGE,
MUTTIL

INTRODUCTION

Team members : Kavya Ramesan, Mohsena
Mohammed

Shabna CM

Agency Name : Women and Child Development
Department

District Level ICDS Cell, Civil
station

Duration : 21 days

Faculty supervisor : Ms. Rija Rappai

AGENCY PROFILE

- Name and address of the agency: Women and Child
Development Department,
Wayanad District Level ICDS
Cell, Civil station, 673121
- Nature of organization : Government organization
- Year of establishment : 2017

The Department of Women and Child started functioning in 24/11/17 for ensuring the holistic, physical, psychological, cognitive and emotional developments of women and children and a gender sensitive family, community, programme and policy for the development and protection of women and children.

MISSION

Empowering women and children through policies, programs and projects that tap interdepartmental synergies, build strong partnerships, and take a results-based approach so that women and children enjoy their rights and live with dignity and without violence.

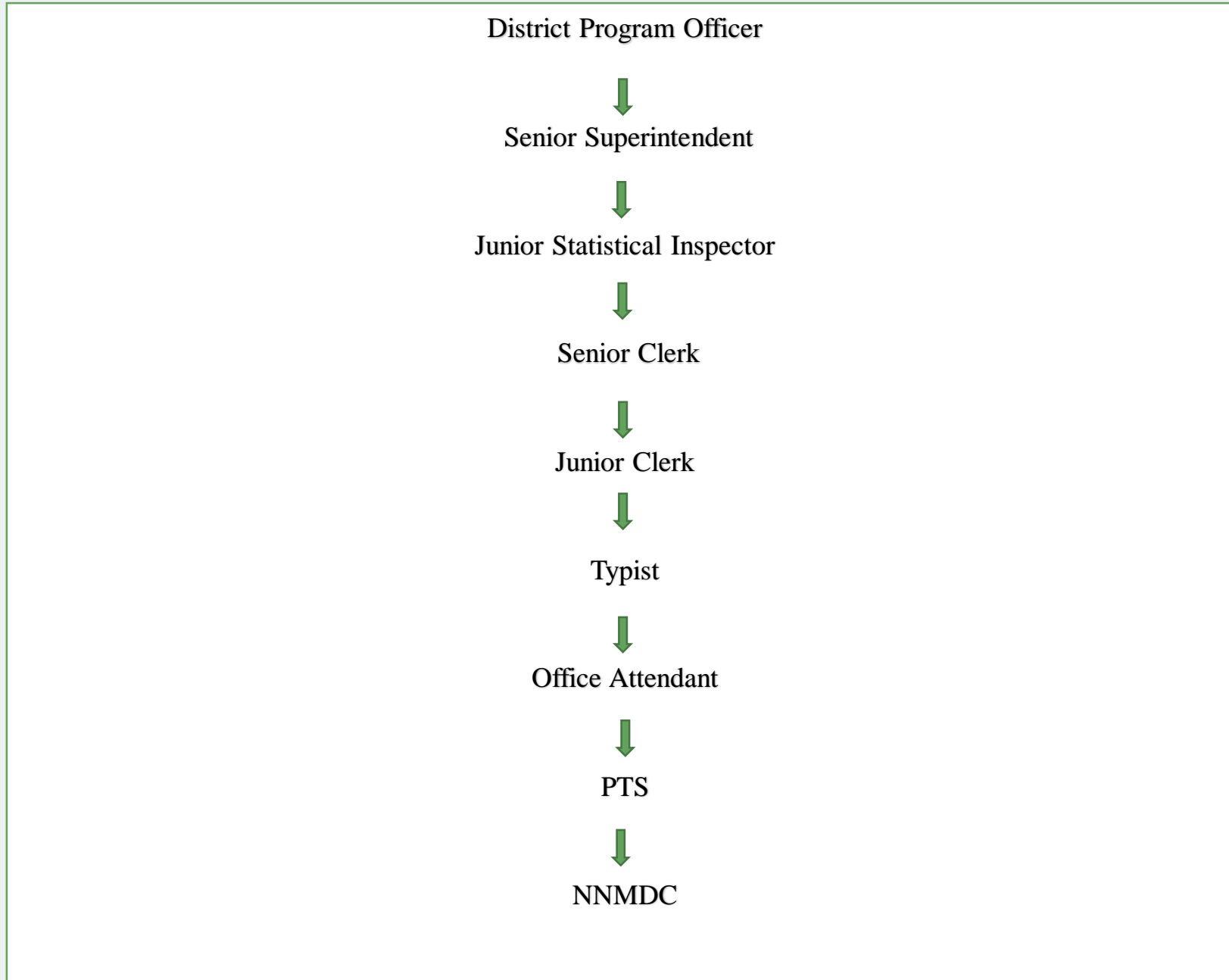
VISION

An inclusive state where all women are socially, politically and economically empowered, and all children are protected, nurtured, and encouraged to realize their full potential as well as participate appropriately in decisions that affect them.

AIMS AND OBJECTIVES

- To improve the nutritional and health status of children in the age-group 0-6 years.
- To lay the foundation for proper psychological, physical and social development of the child.
- To reduce the incidence of mortality, morbidity, malnutrition and school dropout.
- To achieve effective co-ordination of policy and implementation amongst the various departments to promote child development.
- To enhance the capability of the mother to look after the normal health.

ADMINISTRATIVE STRUCTURE



COMMON ACTIVITIES BY THE TEAM

- Attended the orientation session at Civil station.
- Attended in various programs under WCD in civil station :-
 1. Creche inauguration
 2. ICDS review meeting
 3. POSH Act workshop
 4. Inauguration of Poshan maa
- Did office work at program office.
- Visited shelter home at Mananthavady.
- Social work trainee visited various Anganwadis under Kalpetta block : Emily, Ambileri, Thurkey bazar, Ponnada, Thurakkod kunn, Gudallai, Pallithazhe, Maniyamkode, Puliyarmala, Edapetty.
- Conducted community program.

- Visited different communities : Kokuzhi, Chuzhali, Ponnada, Gudallai, Edapetty, Muttil
- Did five case works.
- Did two group works at Kokuzhi and Muttil.
- Visited Tribal Extension Office.
- Visited SSK District Project Office.
- Visited Jyothinivas, a psychosocial rehabilitation centre.
- Did community organization.

INDIVIDUAL ACTIVITIES – KAVYA RAMESHAN

Requirement	No.of case work	Problem	Theoretical framework
Case work	1	<ul style="list-style-type: none"> Schizophrenia Client can't treat her diseased son 	<ul style="list-style-type: none"> Non- judgemental attitude Empathy Principle of confidentiality
	2	<ul style="list-style-type: none"> Ulcer patient Client's sons are not caring and treating her. 	<ul style="list-style-type: none"> Principle of control emotional involvement
	3	<ul style="list-style-type: none"> Domestic violence Husband can't give her son custody 	<ul style="list-style-type: none"> Empathy Problem solving
	4	<ul style="list-style-type: none"> Relationship breakup Client's mother distance and anger attitude 	<ul style="list-style-type: none"> Principle of acceptance Principle of individualization
	5	<ul style="list-style-type: none"> Dropout student 	<ul style="list-style-type: none"> Non- judgemental attitude

Requirement	No.of group	Problem	Individualactivities
Group work	1	10th passed students but they are lazy to go school	Talk about themotivational story of Charle Chaplin
	2	Dropout	Talk about theimportance of job

MAJOR OBSERVATION AND REFLECTION

- The trainee observed that most of the people have not aware about the importance to maintain our mental health.
- The people have lack of knowledge about our women protection system.
- In many colony living Students facing lack of transportation facility.
- In Wayanad only one shelter home with limited facilities.

MAJOR LEARNINGS

- Trainee learn about the functions of shelter home, WCD and WPO.
- Trainee learn how the family relationship effect a child's life.
- Trainee learn to solve a problem effectively .
- Trainee understand the functioning of TEO and SSA.

INDIVIDUAL ACTIVITIES – MOHSENA MOHAMMED

Number of case work	Problem	Theoretical framework
1	<ul style="list-style-type: none"> • Rape • Client keeps revisiting the incident 	Principle of non-judgmental attitude, principle of confidentiality
2	<ul style="list-style-type: none"> • Hemiplegia • Client is mentally down as this occurred suddenly 	Principle of controlled emotional involvement, principle of purposeful expression of feelings
3	<ul style="list-style-type: none"> • Psychiatric illness 	Principle of individualization
4	<ul style="list-style-type: none"> • Aggressive towards her mother 	Principle of non-judgmental attitude, principle of acceptance
5	<ul style="list-style-type: none"> • Not going to school • The client got scared after she was suddenly caught by a man who was on 	Principle of confidentiality, principle of purposeful expression of feelings

Requirement	No.of group	Problem	Individualactivities
Group work	1	10th passedstudents butthey are lazyto go school	Talk about themotivational story of APJ Abdul kalam
	2	Dropout	Conducted a game Conducted a section to talk about their ambitions

MAJOR OBSERVATION AND REFLECTION

- The trainee observed that the shelter home was very congested and was not much clean.
- The trainee observed that all the anganwadi teachers and helpers were very caring towards the children.
- The trainee observed that the inmates at Jyothinivas had good change in them after getting admitted there.
- The anganwadi workers had difficulty in uploading datas in poshan tracker due to network issues.
- The trainee observed that most of the people in colonies were very shy and was not willing to interact with us.

MAJOR LEARNINGS

- The trainee improved the skill of documentation for report writings of field work.
- The trainee learned to use communication and interactive skill in a professional manner.
- The trainee improved the questioning and interviewing skill in field work.
- The trainee learned to organize an official program in an effective manner.
- The trainee improved listening skill through active listening.
- The trainee learned to better manage time in reaching many different places in a day.
- The trainee learned to gather a group and manage them.

INDIVIDUAL ACTIVITIES – SHABNA CM

Number of case work	Problem	Theoretical framework
1	The client was divorced and faced domestic violence. She feels loneliness and want to be independent	principle of confidentiality ,principle of self determination
2	The client feels loneliness after the death of her daughter	Principle of controlled emotional involvement, principle of purposeful expression of feelings
3	psychiatric illness	Principle of individualization principle of acceptance
4	The client feels loneliness in her family	principle of acceptance, principle of purposeful expression of feelings
5	Pocso case	Principle of confidentiality, Principle of non-judgmental attitude

Requirement	No.of group	Problem	Individualactivities
Group work	1	10th passedstudents butthey are lazyto go school	Talk about themotivational story of A professor
	2	Dropout	Talk about RCT

MAJOR OBSERVATION AND REFLECTION

- The trainees observed the women and child department and its functioning
- The trainees observed that most of the people are not aware about the schemes in WCD
- Most of the people in the colony are facing difficulties in transportation
- The trainees observed the various communities and their culture
- Trainees observed the anganwadi workers faces difficulty for uploading data's in poshan tracker due to the network issues

MAJOR LEARNINGS

- The social trainee learned about the Anganwadies and its functioning
- The trainees learned more about the WCD department
- The trainee learned to use communication and interactive skill in a professional manner
- Trainees learned to improve the skills in documentation and implementation of program in effective manner
- Trainees learned more about shelter home and WPO

EVALUATION

Strength:

- The trainees build a good rapport with the anganwadi teachers and asha workers.
- The trainees acquired lots of skills like listening skill, interviewing skill, documentation skill.
- The trainees were able to identify a good group for group work.
- The trainees had successfully conducted a community program in a professional way.
- The trainees could get access to visit places like Shelter home and Rehabilitation centre.
- There was a could good coordination between the trainees, so the trainees were able to successfully complete the field work.

Weakness:

- There was no work to do at program office.
- Lack of knowledge on counselling for the community people had made it difficult for the trainees in doing case work.
- The trainees had an opportunity to conduct a mental health survey under the rehabilitation centre but could not do it due to lack of time.

Opportunity:

- The trainees got the opportunity to visit shelter home and rehabilitation center.
- The trainees got the opportunity to know about the functions of WCD and WPO.
- The trainees got the opportunity to learn about the schemes and beneficiaries and new projects of ICDS.
- The trainees got to understand the functions of TEO and SSA.

Threat:

- Due to heavy rain, the trainees had faced difficulty in conducting group work and community program.
- There was difficulty in gathering the members for group work for all the sessions.
- As the cases were at different places, the trainees had difficulty in reaching all those places in a day.

DOCUMENTATION






KOMUNITA
 Celebration of freedom with communities

MERAK
 Live with joy and happiness
Chair Yoga for Elderly

2022 August 24 | 3.00PM
 Venue: Thurkey bazar Anganwadi

Department of social work
 WMO ARTS AND SCIENCE COLLEGE
 Muttil, Wayanad






CONCLUSION

Social work trainees successfully completed their 21 days of field practicum from 10/08/2022 to 02/09/2022 under WCD. The trainees understood more about the agency, its services and functions. The trainees attended in various programs under WCD in civil station, did office work at program office, visited various anganwadis, conducted a community program, visited different communities, visited various agencies and institutions, did case work and group work and community organization.

Thank you

INSTITUTE OF MENTAL HEALTH AND NEURO SCIENCES

MEDICAL COLLEGE, KOZHIKODE, KERALA

Specialization: **Medical and psychiatry**

Presented By

Hilal Salih

Aishwarya VG



3RD Semester field work practicum

Department of Social Work

WMO Arts and Science College Muttill, Wayanad

INTRODUCTION

As part of MSW curriculum, social work trainee successfully completed 23 days Third Semester Field work. Social work trainee placed in 23 days in INSTITUTE OF MENTAL HEALTH & NEUROSCIENCE (IMHANS) Calicut on 1/12/2021.

Field work placement is an opportunity for social work trainees to practice and enrich experiences. It was an excellent exposure to the trainee. The trainee was able to study and work in psychiatric settings with adult, child, Recovery facilitation unit and Kuthiravattam Rehabilitation. Trainee able to meet, observe and learn from various psychiatric disorders persons. Trainee have done out patient care able to seek intervention's followed manner in the setting. Trainee was able to learned more intervention methods and that would be applies. Created a better good healthy relationships with staffs in agency. Trainee gained more knowledge about the agency and its functions, recording works like clinical case history and mental status examination (MSE).works, activities. Trainee got an opportunity for participate a all Kerala level programme SOWOCO and other programs include in the agency. Trainee got a wonderful experience from the field work.

AGENCY PROFILE

- The Institute of Mental Health and Neurosciences (IMHANS) is an autonomous institute under the Government of Kerala and is in the process of developing into a centre of excellence under the national mental health program of Government of India. Recognizing the community needs, the institute has identified community mental health, child mental health and psychosocial rehabilitation as its thrust areas. IMHANS is active in mental health care delivery, training, research and policy development. Established in 1982, the institute has its headquarters in the Government Medical College campus, Kozhikode with services spread across northern districts of Kerala.
- There are 4 psychiatrists, 5 Clinical psychologists, 4 Psychiatric Social Workers, 2 Psychiatric nursing staff, 30 general staff in this hospital. They dedicate their selfless service to the psychiatric patients during day and night throughout in a year.

Vision

A world where-

- Everybody in need of mental health service receives appropriate care as a basic right
- Mental health is valued as an asset and there is collective action to promote mental health
- Communities are empowered to take due responsibility for the mental health of their members
- Social and economic inequalities do not limit communities from achieving best levels of mental health

Mission

- To lead the efforts in meeting the mental health needs of the population in the region.
- To promote and assist public health approaches in mental health through service development, capacity building, research, policy making and networking.
- To develop efficient, cost-effective and reproducible models of mental health care delivery.
- To advance knowledge in basic and clinical sciences relevant to mental health.

ADMINISTRATIVE STRUCTURE

Chairman

Vice Chairman

Director

Members

Finance Secretary

Planning Secretary

Director of medical education

Director of health service

Department heads of IMHANS

Departments

DEPARTMENT OF PSYCHIATRY

Dr. Ashok Kumar , Assistant Professor

Dr. Anish P K, Assistant Professor

Dr. Amith Gangadharan, Assistant professor on deputation

DEPARTMENT OF PSYCHIATRIC NURSING

Dr. Reena George, Assistant Professor and Head of the department

Ms. Alka Raju, Assistant Professor

DEPARTMENT OF PSYCHIATRIC SOCIAL WORK

Dr. Seema P. Uthaman, Assistant Professor and Head of the Department

Dr. Ragesh, Assistant Professor

Dr. Jobin Tom, Assistant Professor

DEPARTMENT OF CLINICAL PSYCHOLOGY

Dr. Abdul Salam, Assistant Professor and Head of the Department

Dr. Jaseem Koorankot, Assistant Professor

Mr. Ratheesh S.R, Lecturer

Ms. Anu Alphonse, lecture

OBJECTIVES

The institute is moving forward with the objectives

- 1. To develop the institute into a premier centre with advanced treatment and post-graduate training in all the neuropsychiatry disciplines
- 2. To provide comprehensive mental health care for the mentally ill patients by early detection, modern treatments and rehabilitation.
- 3. To develop community mental health programs and training of primary health care personnel including medical and Para-medical staff.
- 4. To conduct research activities regarding the molecular, neurophysiological, psychological and sociological basis of neuropsychiatric disorders.
- 5. To educate the public about neuropsychiatric disorders in the community

REQUIREMENTS

- Clinical case history and mental status examination-5
- Psychosocial assessment-5
- Social case work practice-3
- Social group work-1
- Project proposal relevant to the setting-1

HILAL SALIH

CASEWORK

Case :1	Intervention	Theoretical framework	Outcome
Name : V , Age : 50, Sex : male	Relationship building, Assessment in collect informations	Behavioural therapy Recreational activity	Good behaviours are formed
Socio demographic details :APL	Psycho education to parents	Empathy, Acceptance Provide a comfortable space	Control their anger
complaints : client have anger problem, lack of self care. She is mild mental retardation a	Relaxation techniques, social skill training is given through modelling		

Case 2	Intervention	Theoretical frame work	Outcome
Name : F, Age : 23,sex : female	Relationship building, diagnosed,	psychotherapy Personality assessment	Understand the personality of individual
Sociodemographic details : APL	Psycho education about the disorder	Anger management, sleep hygiene	Understand how TO cope Up with tension
Complaints :Increased anger, sleep disturbance, lack of interest ,decreased concentration.	Relaxation techniques, make making work promoted more engaged in works, talking to someone close. Diary writing		
Adjustmental disorder			

Case 3	Intervention	Theoretical framework	Outcome
Name : V , Age : 30,Sex : Male	Relationship building, diagnosed,	Supportive psychotherapy Cognitive behavioural therapy	They started to build social skills
Sociodemographic details : BPL		Psycho education	Parents aware more about the disease
Complaints : Hearing voices of a lady, patient have fear that other will harm, patient feels fearful and sad	Social skill training, Through models, descriptions etc		
Paranoid schizophrenia			

GROUP WORK

Details of the group	Intervention	Theoretical frame work
Selected group : Rehabilitated psychiatric person with residual stage.	Selected group members, Purpose of the group will be conveyed, creative thinking, attention span, stress management, exercise	Social skill training, social learning theory. cognitive retraining , stress management
Objective of the group : To improve their creative thinking, to teach them stress management techniques, communication, attention span and to do physical exercise.	Decrease Shyness, in front of others to communicated, etc the skill based activities are done. They started to think creatively. Started new behaviour of doing exercise daily	

OBSERVATION

- Trainee observed that the settings are well maintained .
- The trainee observed that the agency is providing a key for every staffs and students which ensure the safety security of the agency
- Trainee observed that psychology department and psychiatric department in the agency is very active.
- The trainee observed that agency is providing several therapies for the patients by the psychology department
- There are several students for the internship in the settings in psychology as well as social work and observed a workshop provided for college students on mental health disorders.

- There are private rooms with bystanders and ward for men and women .
- The patients were getting counselling services and sessions accordingly
- Trainee observed the daily routines of agency are been strictly followed
- Trainee observed the selfless service of the staffs in the settings

MAJOR LEARNING

- Trainee learned about the agency and its functioning
- Trainee learned on the disorders and its cause
- Trainee learned to prepare the case study, and diagnosis, MSE
- Trainee learned the role of social worker in a mental health settings
- Trainee learned the therapies provided in the settings
- Trainee learned on the inpatient , recovery facilitation unit and rehabilitation in the settings
- Trainee learned on the facilities provided for the students in the settings

EVALUATION

Strength :

- The support from the agency and the supervisor was a strength for the trainees
- The co-operation between the co-trainees was a strength
- Trainee build a good relation with the members in IMHANS

Weakness

- The lack of knowledge about disorders was weakness in the field.
- There were no Inpatients available

Opportunity:

- The opportunity to identify the weakness and work with them
- Got opportunity to work in Child ,Adult , Recovery facilitation unit and Rehabilitation.
- To work in mental health settings
- Got chance to Participate in social workers training program ‘SOWOCO’

Threat :

- The lack of activities and initiations was a threat
- Covid 19 pandemic was a threat for trainee

AIWARYA VG

Case 1 :	Intervention	Theoretical frame work	Outcome
Name : xx, Age:58,sex: male	Relationship building, collect informations	Activity shedule - CBT, Social training skill - communication	The person startrd to excercise doing,participated activities
Socio demographic details : BPL	Diagnosed their disorder.	Positive reinforcement	
Complaints : the cilent was not participated excercise and other activities, angering	Provide evaluation processing charge.,reoaxation techniques, breathing excercise, water drinking,	Empathy, paraphrasing, summarizing	Started to relaxation techniques

Case :2	Intervention	Theoretical framework	Outcome
Name : xx, Age : 28,sex : female	Relationship building, Assessment in collect informations	Behavioral therapy - anger management techniques in relaxation techniques	Able to avoid a clash situation used skip that situation.
Socio demographic details :APL	Diagnosed, anger management techniques includes	Empathy, Acceptance Provide a comfortable space	
complaints :The client very angry. Not able to control sometimes anger. She is mild mental retardation and epileptic disorder	Relaxation techniques, reverse counting, drinking water habit create, skip the moment,contract written		

Case 3	Intervention	Theoretical framework	Outcome
Name : mm, Age : 28, sex : female	Relationship building, diagnosed,	Vocational rehabilitation - cake make	They identified engaged works that would be better. So, cake making started,
Sociodemographic details : BPL	Psycho education about the disorder	Behavioral therapy- relaxation techniques	Understand how cope with tension
Complaints : the client is worrying any sort of matters, patient is GAD, OCD patient residual stage.	Relaxation techniques, make making work promoted more engaged in works, talking to someone close. Diary writing		

GROUP WORK

Details of the group	Intervention	Theoretical frame work
Selected group : RFU psychiatric person with residual stage.	Selected group members, Purpose of the group will be conveyed, creative thinking, attention span, listening skill, memory power improvement for activities are done.	Positive reinforcement Social skill training, social learning theory. Cognitive retraining (news reading activity)
Objective of the group : To improve their creative thinking, listening skill, communication, attention span, memory power.	Decrease Shyness, in front of others to communicate, etc the skill based activities are done.	

OBSERVATIONS

- Trainee observed that IMHANS is a well developed structure. Each department have each rooms and doctors or specialists.
- Trainee observed that each work have firma procedure
- The supervisors and all staffs are not wear uniform.
- Trainee observed that in agency only inpatient services are occurred.
- Psychiatric social workers follow a good communication.
- The psychiatric social workers are always very talented and their interventions are well
- In IMHANS no registration format
- Trainee observed lots of variety if disorders patients.

LEARNINGS

- Trainee learned that how will treat child with psychiatric disorders.
- Trainee learned how ways to group work sessions are conduct
- Trainee learned more clinical interventions for psychiatric disorders persons
- Trainee learned parent management techniques
- Trainee learned techniques for used for ADHD, conduct disorder, GAD, behavioural issues.
- Trainee learned done case work
- Trainee learned more intervention path ways
- Trainee learned more disorders in psychiatry.

EVALUATION

1. Strength

A. External Strength

- Trainee evaluated that the psychiatric social workers in child setting and other supervisors are very systematically follow ethics of social work.
- Psychiatric social workers are also very professionally talented person. With discussions and other interventions are also provide permission only MPhil
- Professionals.

B. Internal Strength

- Trainee evaluated that the communication skill is used as well. Its helps to easily build rapport between clients, interacted all person with psychiatric disorder staffs in agency.
- Trainee evaluated would have been helps to ask many questions to patients and their family for get more informations.
- Trainee evaluated that the observation skill is used as well. Its helps to diagnosis, better evaluation.
- Trainee evaluated that the evaluation skill is helps to evaluate the process, activities, structure of a agency.
- Trainee evaluated that problem solving skill used as helps to clients. And solving problems. (problem solving skill).
- Trainee used professional skills that would be make better interventions to clients.

2.Weakness

External weakness

- Trainee evaluated that SOWOCO program have not planned a previous planning. Last time make anger talk speech.
- Not occurred inpatient care in the agency.
- In the agency need a hotel that absence was very crucial.

3.opportunity

- Trainee got an opportunities for attend cases, doing case work, doing group work
- Got opportunity for in the setting. Work on their improvement.
- Participated SOWOCO program

4.Threads

- Covid 19 pandemic situation so the RFU members are not all came daily.
- Not able to identified details about disorder condition.
- Not allowed take photo and not communication will there about the disorder.

CONCLUSION

The field work in the IMHANS, Kozhikode was a settings which is very much student friendly and a good exposure for the students. Trainees have completed the requirements in the agency and acquired good knowledge on the illness and disorders, therapies for the ADHD , LD, SCHZOPRENIA, DEPRESSION, ADJUSTMENTAL DISORDER, ANXIETY DISORDER etc. are observed by the trainees.

THANK YOU





FIELD WORK PRESENTATION

PRESENTED BY

SHAHMA C P

ANAGHA GOPAN

ASHMA RAVEENDRAN

Third Semester

Medical and Psychiatry

MSW

WMO Arts and Science college, Muttill, Wayanad

INTRODUCTION

- As part of MSW field work practicum trainee and co trainee got 25 days of field work exposure in the
- Field work started from
- Trainee conducted field work under the supervision of faculty supervisor
- Agency supervisor
- Trainee and co trainee followed all the rules and regulations which has been given by the department as well as the

BISHOP VAYALIL MEDICAL CENTRE

MOOLAMATTOM



AGENCY PROFILE

- Thus Bishop Vayalil Medical Centre took shape , and was inaugurated on 21st Oct 1978.
- It started with a bed strength of 100, 4 Departments and 7 doctors team, which has now become a 200 bedded hospital with 12 departments and 16 doctors

MISSION AND VISION

OUR VISION

To reach the unreached.

OUR MISSION

Bishop Vayalil Medical Centre, Moolamattom is envisioned and initiated to provide outstanding holistic care with compassionate and self sacrificing love of Jesus to all those who seek help based on need and urgency regardless of their religion ,affection and financial situation.

ACTIVITIES

- Trainee learned about the functioning of BVMC in various mental and medical settings
- Trainee has done group work
- Trainee has done case work
- Trainee build rapport towards patients
- Perform the daily routine of the inmates as per the time table scheduled to them.
- Assist and instruct the inmate to do daily routine activities.
- Conduct group activities for the inmates in psychiatric ward and de-addiction center .
- Provided psycho social support to the inmates



SHAHMA CP



REQUIREMENTS

SOCIAL CASE WORK - I

Case	Intervention	Theoretical Framework	Outcome
<p>Name :XY Age : 40 Sex : Female Education : plus two Occupation: Tailor Religion : Christian</p> <p>Major complaints: Sleep disturbance ,increased morality hearing phantom voices re</p> <p>Basic assessment details</p>	<p>To reduce the moral things and inability to keep eye contact</p>	<p>Active listening and Principle of communication</p>	<p>Active communication and keeping eye contact.</p>

SOCIAL CASE WORK -2

Case	Intervention	Theoretical Framework	Outcome
<p>Name :ab Age :30 Sex : female Education : plus two Occupation: maid Religion : Christian</p> <p>Major complaints: Sleep disturbance ,hearing phantom voices , hyper tension, restless</p> <p>Basic assessment details</p>	<p>to have a good rapport and to change the behavior</p>	<p>Rapport building and</p>	<p>Reduced tension and negative thoughts</p>

SOCIAL CASE WORK -3

Case	Intervention	Theoretical Framework	Outcome
<p>Name :ab Age : 40 Sex : male Education : plus two Occupation: supervisor in production company Religion : Christian</p> <p>Major complaints: Sleep disturbance ,decreased memory ,excessive use of alcohol</p> <p>Basic assessment details</p>	<p>to make aware about the impact of using alcohol</p>	<p>Trainee helped to learn about how substances use our body and mental health</p>	<p>Reduced cravings</p>

SOCIAL GROUP WORK

Details of the group	Intervention	Theoretical frame work	Outcome
<p>Number of group members : 14</p> <p>Nature of the group: psychiatric male ward</p> <p>Objectives of the group:</p> <ul style="list-style-type: none"> • To develop the communication in group • To control the anger management • To make aware about the family relationships • To ensure the active participation of all member in group work • To build a unity among 	<ul style="list-style-type: none"> • To take classes about the The personality development • Make inactive members to active • Help to increase memory 	<p>Role of group worker</p> <p>Communication skills</p> <p>Conflict management</p> <p>Anger management</p>	<ul style="list-style-type: none"> • Tried to understand how to become a good personality • Created a unity among members • Understood the value of interpersonal relationship • Attempted to do daily activities like ecxersise news paper reading

OBSERVATIONS

- ❑ Trainee observed that charity place an important role in bvmc
- ❑ Trainee observed that dr.anniece ciryac is the back bone of bvmc
- ❑ There are both medical and psychiatric settings , mostly patients are coming for psychiatric treatment
- ❑ Doctors were very friendly to both ip and op patients and families
- ❑ Every day there will be a rounds for all wards
- ❑ In De addiction ward there are people with highly psychiatric problems
- ❑ In psychiatric ward there are people by different age category,
- ❑ There are different names for each ward which is settled by the name of infant jesus

LEARNINGS

Trainee learned about the importance of social worker in both medical and psychiatric setting

Trainee learned about the functioning of bvmc

Trainee learned how to build good rapport towards patients and other staffs

Trainee learned about how to take case history and mse through practice

Trainee learned about various therapies

Learned about how to take an awareness class for people

Trainee learned about ECT and its functioning

Trainee learned about the differences between op file and ip file



ANAGHA GOPAN



REQUIREMENTS

SOCIAL CASE WORK - I

Case	Intervention	Theoretical Framework	Outcome
<p>Name :XXXXXX Age : 48 Sex : Female Education : Degree Occupation: Teacher Religion : Christian</p> <p>Major complaints: Sleep disturbance,fear, hearing phantom voices</p> <p>Basic assessment details</p>	<p>To reduce the fear To make aware about the disease</p>	<p>Active listening Empathy</p>	<p>Actively participated in exrecise session</p>

SOCIAL CASE WORK -2

Case	Interventions	Theoretical framework	Outcome
<p>Name :XXXXXX Age :51 Sex: Male Education: SSLC Religion: Christian</p> <p>Major complaints: Sleep disturbance Weight gain sadness</p>	<p>To reduce the sadness and make more interactive in all session</p>	<ul style="list-style-type: none">• Active listening• Empathy• Principle of communication.	<p>Observed that tried to build a good interaction with others</p>

CASE STUDY 03

Case	Interventions	Theoretical framework	Outcome
<p>Name : XXXXX Age : 46 Sex : Male Religion:Christian Education: 9th Std Occupation: Carpenter</p> <p>Major complaints: Hearing phantom voices Alcohol abuse Anger</p>	<p>To make aware about the side effects of alcohol consumption.</p> <p>Help to manage anger</p> <p>To make bother about the values of family relationship</p>	<p>Active listening.</p> <p>Anger management</p>	<p>Tried to control his anger</p> <p>Understand the side effects of consumption of alcohol</p>

CASE

Case	Interventions	Theoretical framework	Outcome
<p>Name: XXXXX Age: 51 Sex: Male Education: Poly Technique</p> <p>Major complaints: Hearing phantom voices Thought controlled by others Inserted a disc in brain</p>		<p>Active listening</p> <p>Principle of communication</p>	

CASE STUDY 05

Case	interventions	Theoretical framework	Outcome
<p>Name:XXXXX Age: 16 Sex:Male Religion: Hindu Education: 10 th</p> <p>Socio demographic details: Broken family, Poverty</p> <p>Basic assessment details: Bio: Physically fit. Psycho : Less emotional stability. Social: Less active with peer group</p>	<p>To build a good rapport with client, to know about the problem</p>	<p>Active listening</p> <p>Empathy</p> <p>Self determination</p>	

SOCIAL GROUP WORK

Details of the group	Intervention	Theoretical frame work	Outcome
<p>Number of group members : 13</p> <p>Nature of the group: De addiction</p> <p>Objectives of the group:</p> <ul style="list-style-type: none"> • To develop the communication in group • To control the anger management • To make aware about the side effects of alcohol consumption • To make aware about the family relationships • To ensure the active 	<ul style="list-style-type: none"> • To take classes about the side effects of alcohol consumption , family relationship and how to manage the anger • Planned games to improve their communication in group . • Make inactive members to active 	<p>Role of group worker</p> <p>Communication skills</p> <p>Conflict management</p> <p>Anger management</p>	<ul style="list-style-type: none"> • Tried to understand the side effects of alcohol consumption and values of family relationship • Learned to control the anger and to handle a situation • There is an improvements in their group bond.

OBSERVATIONS

- Trainee observed that the hospital is well equipped
- Trainee observed the re are restriction for visitors due COVID 19 Pandemic
- Trainee observed the mannerism of the psychiatric patients.
- Trainee observed that there are different departments for the patients
- Trainee observed that there are enough staffs to maintain the wards neatly.
- Trainee observed that there are regular rounds in all wards
- Trainee observed that there is a family ward for new admission.
- Trainee observed the importance of social worker in psychiatric ward
- Trainee observed the daily routine of psychiatric patient
- Trainee observed the treatment methods

LEARNINGS

- ❑ Trainee learned an overall information on the agency, the mission, the working etc
- ❑ Trainee learned the how to interact with the psychiatric patients.
- ❑ Trainee learned the professional skills and its principles such as acceptance, confidentiality, empathy etc
- ❑ Trainee learned about the various symptoms and disorders.
- ❑ Trainee learned to do a case work
- ❑ Trainee learned to take case history and MSE of psychiatric patients
- ❑ Trainee learned to build a good rapport with the patients
- ❑ Trainee learned about the therapies that used by the clinical psychologist
- ❑ Trainee learned to ECT and the functioning of ECT
- ❑ Trainee learned about the case file procedures .



ASHMA RAVEENDRAN



REQUIREMENTS

1 .Social case work

Case	Intervention	Theoretical Framework	Outcome
<p>Name : Shiny Age : 52 , Sex : female Religion : Christian Marital status : divorced Occupational status : nill Major complaints :</p> <ul style="list-style-type: none"> ● Sadness ● Decreased sleep ● Decreased appetite ● Decreased social interaction ● Weight lose ● Decreased libido ● Hearing phantom voice ● Restlessness ● Precipitating factor: death of son ● Onset: gradual ● Course: continues 	<p>Life skills Exercise Newspaper reading Future plan</p>	<p>Active listening</p> <p>Empathy</p>	<p>Start newspaper reading</p> <p>Actively participated in exrecise session</p> <p>Set a future plan</p>

Case	Intervention	Theoretical Framework	Outcome
<p>Name :XXXXXX Age : 49 ,Sex : male Religion : Christian Marital status : unmarried Occupational status : nill Major complaints: Repetitive uncontrollable thought,Excessive irrational worry, Suspicious ideas, Sadness,Worthless Hope less,Restless Decreased appetite Weight lose,Over tension Decreased social interaction.</p>			

Case	Intervention	Theoretical Framework	Outcome
<p>Name :XXXXXX Age : 34 Sex : male Religion : christian Marital status : unmarried Occupational status : abroad Major complaints Uncontrollable alcohol use Decreased appetite Decreased sleep Decreased memory Tiredness Sadness Anger Crying spells Lazy</p>	<p>To reduce the fear To make aware about the disease</p>		<p>Actively participated in exrecise session</p>



2. Social group work

Details of the group	Intervention	Theoretical frame work	Outcome
Number of group members : 8	<ul style="list-style-type: none"> ● Stress management ● Anger management 	Role of group worker	<ul style="list-style-type: none"> • Tried to understand the side effects of alcohol consumption and values of family relationship • Learned to control the anger and to handle a situation • There is an improvements in their group bond.
Nature of the group: psychiatric rehabilitation		Communication skills	
Objectives of the group: <ul style="list-style-type: none"> • To develop the communication in group • To control the anger management • To enhance social functioning To make aware about the family relationships • To ensure the active participation of all member in group work 		Conflict management	
		Anger management	

OBSERVATIONS

- Trainee observed that the hospital is well equipped
- There was no bystanders are allowed in IP
- There was a special ward for newly admitted patients there where bystanders are allowed
- Wards and room for patients are very clean and hygiene
- Patients had prayer, exercise and newspaper reading as part of their daily routine
- Some of the patients got cured but they can't get back to home because nobody is willing to take care of them
- The hospital authorities assuring the safety and security of the patients also people who are coming for consult that there were cleaning every day by day
- It is necessary to add all the medical test result in case file

LEARNINGS

- The Functions and administrative structure of the agency
- To take case history and MSE
- Rapport building with clients in psychiatric settings
- Disorders and symptoms
- Role of social worker in the field of psychiatric setting
- Conflict management
- Therapies
- Coordinate an event
- ECT

CONCLUSION

- ❑ Trainees found the opportunity of 25 days field work as new experience.
- ❑ Trainees used the practice the academic knowledge in field work practicum.
- ❑ Trainee and co trainee completed the field work requirements.



THANK YOU

TALES OF INTERNSHIP

Department of Mass Communication and Journalism

DEPARTMENT OF MASS COMMUNICATION AND JOURNALISM

WMO ARTS AND SCIENCE COLLEGE MUTTIL

2020-2023 BATCH

BRAHMAGIRI DEVELOPMENT SOCIETY



0:54



0:56 / 2:20



0:28



0:30 / 2:20

